



Check Point®
SOFTWARE TECHNOLOGIES LTD

IoT Security

Protect Your IoT Devices and
Keep your Business Running

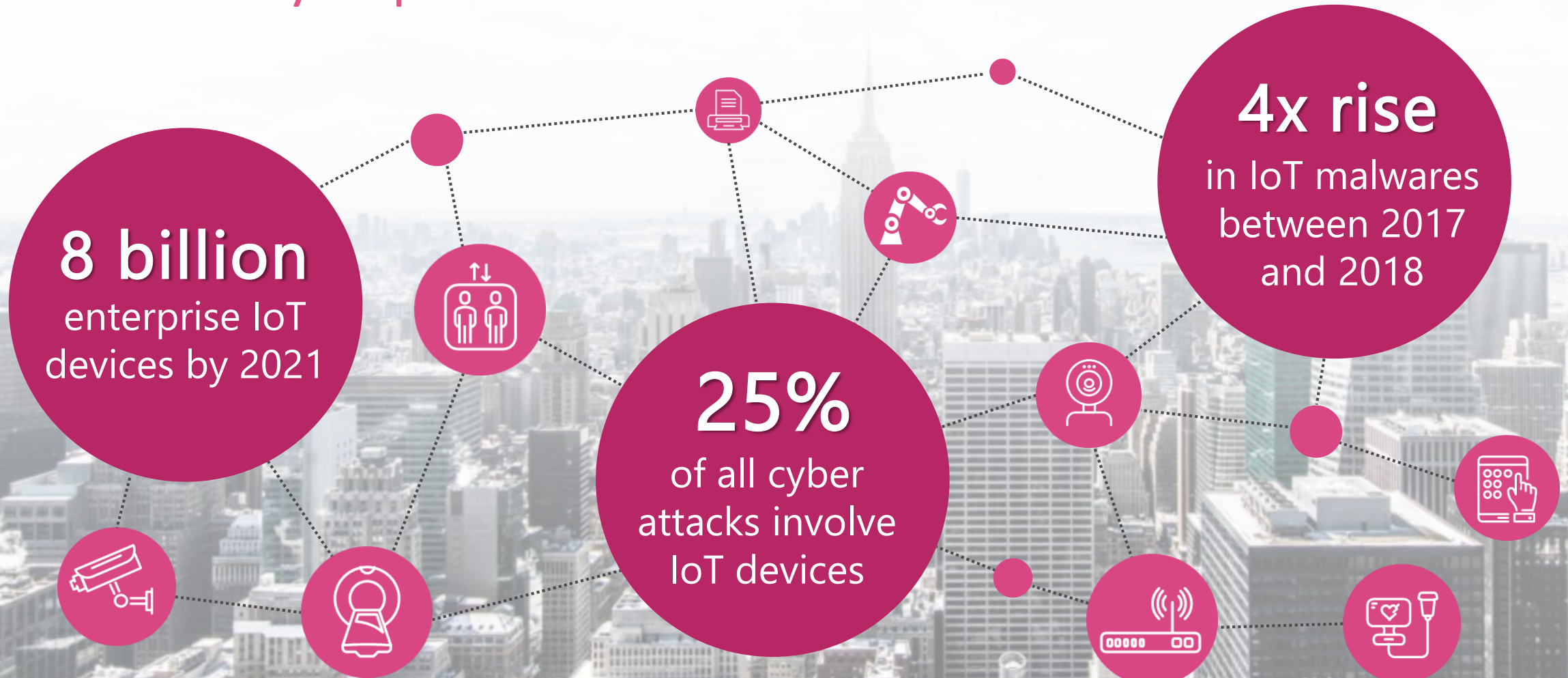
David Galdran
Team Leader Industry, Telco and Government
ICS Security Expert

WELCOME TO THE FUTURE OF
CYBER SECURITY

POWERED BY  CHECK POINT
INFINITY

CLOUD • MOBILE • THREAT PREVENTION

IoT Security Represent a New Frontier



The Smarter Your Environment – The Higher the Risk

IoT Devices are Highly Vulnerable and Easy to Hack

Outdated SW / Legacy OS / No OS

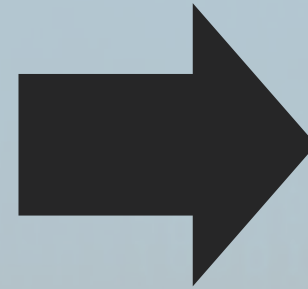
Basic Micro Controllers

No Security-by-Design

Unmanaged Devices

Shadow Devices

Operational Limitations



- Data Breaches
- Data Tampering
- Ransomwares
- Denial of Service
- Physical Damage

IoT Vulnerabilities are All Around Us



Healthcare IoT



Industrial IoT



Smart Building



Smart Office

Introducing...



Check Point Infinity for IoT

Protect Your IoT Devices and Keep Your Business Running

Prevent IoT malicious intents
and unauthorized access to
IoT devices

Prevent infected devices
from compromising other
network elements

END-TO-END IOT SECURITY

Reduce IoT Attack Surface, IoT Threat Prevention, Easy Deployment, Efficient and Unified

DISCOVERY & VISIBILITY



Identify and analyze IoT
devices and traffic

POLICY MANAGEMENT



Apply granular
IoT-based policies

THREAT PREVENTION



Identify and block IoT
malicious intents

SECURITY ENFORCEMENT



Block unauthorized IoT
access and IoT traffic

HEALTHCARE IOT ● INDUSTRIAL IOT ● SMART OFFICE ● SMART BUILDING

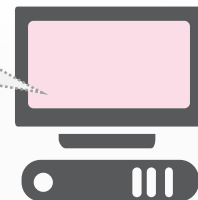
Quick and Easy Deployment



Check Point
SOFTWARE TECHNOLOGIES LTD.

IoT Security Controller

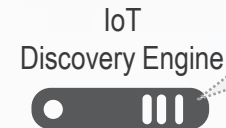
- Configure and manage granular IoT security rules
- Auto generated policies based on customer's profile



IoT Security Controller

IoT Discovery Engine

- Monitors the IoT traffic
- Automatically identify IoT devices and provides deep insight information per device



IoT Discovery Engine

Security Gateway with IoT support

- Control and restrict internal IoT traffic
- IoT application control: Identify and control IoT protocols and commands
- Integrated IPS designed for IoT devices



IoT Security GW



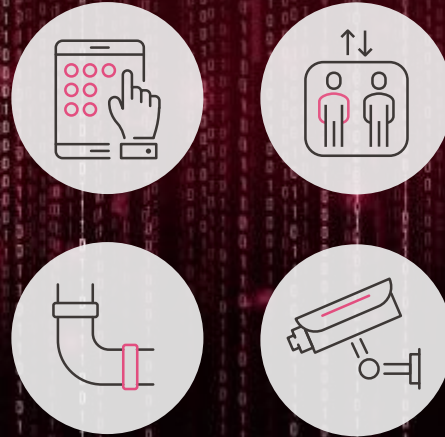
IoT Network

Automatically Identify and Profile IoT Devices

HEALTHCARE



INDUSTRIAL

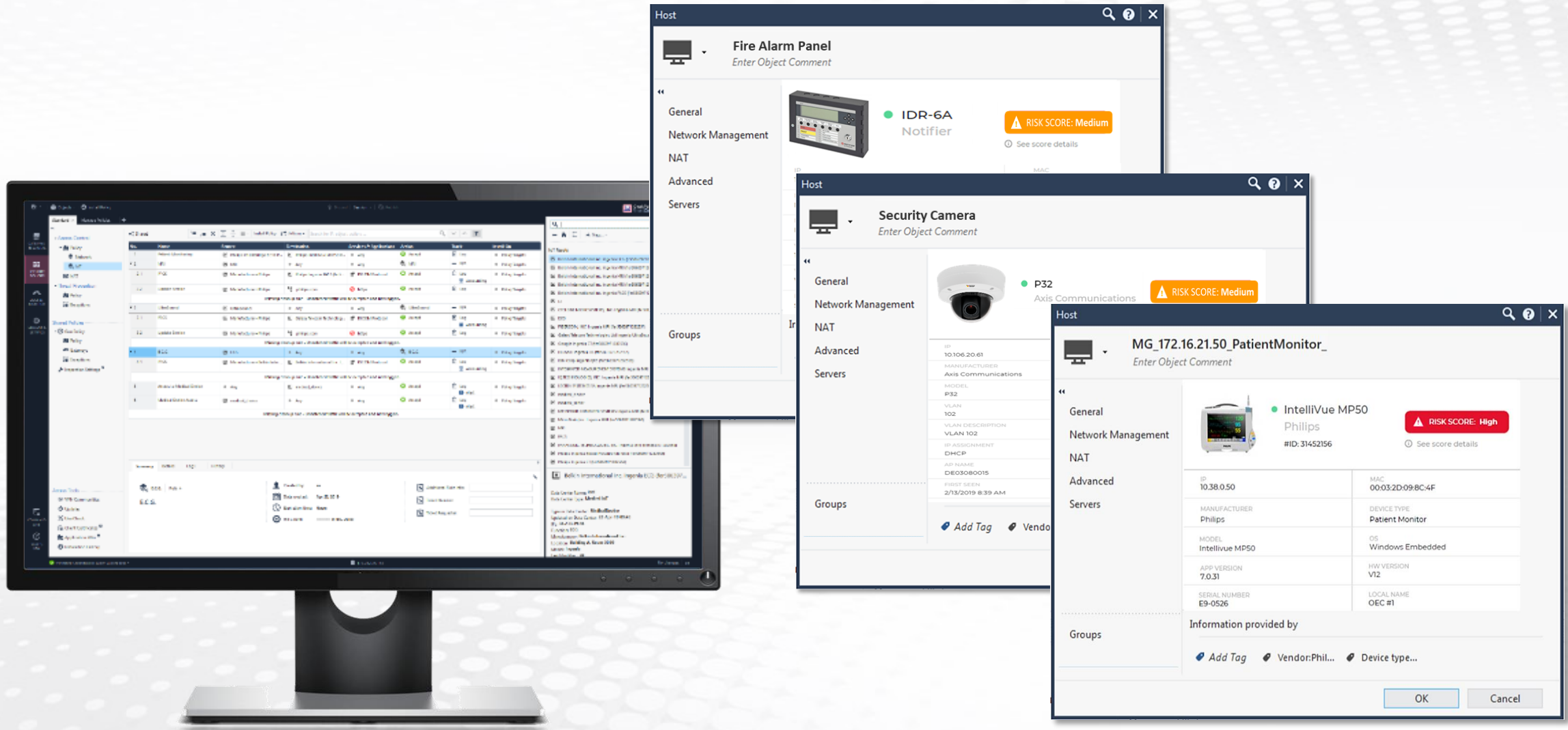


ENTERPRISE



Dedicated discovery engines perfectly suited for the different IoT environments

Deep Insight Information per Device



The image displays the Check Point management console interface, showing a list of devices and their status. The interface is divided into several sections, including a sidebar with navigation options like "General", "Network Management", "NAT", "Advanced", "Servers", and "Groups". The main area shows a table of devices with columns for Name, IP, MAC, and Risk Score. Three device detail windows are overlaid on the main interface:

- Fire Alarm Panel:** Shows a Fire Alarm Panel device with a Risk Score of Medium. The window includes a "General" tab and a "Network Management" section.
- Security Camera:** Shows a Security Camera device with a Risk Score of Medium. The window includes a "General" tab and a "Network Management" section.
- MG_172.16.21.50_PatientMonitor_:** Shows a Patient Monitor device with a Risk Score of High. The window includes a "General" tab and a "Network Management" section. It also displays a table of device information:

IP	MAC
10.38.0.50	00:03:2D:09:8C:4F

MANUFACTURER	DEVICE TYPE
Philips	Patient Monitor

MODEL	OS
IntelliVue MP50	Windows Embedded

APP VERSION	HW VERSION
7.0.31	V12

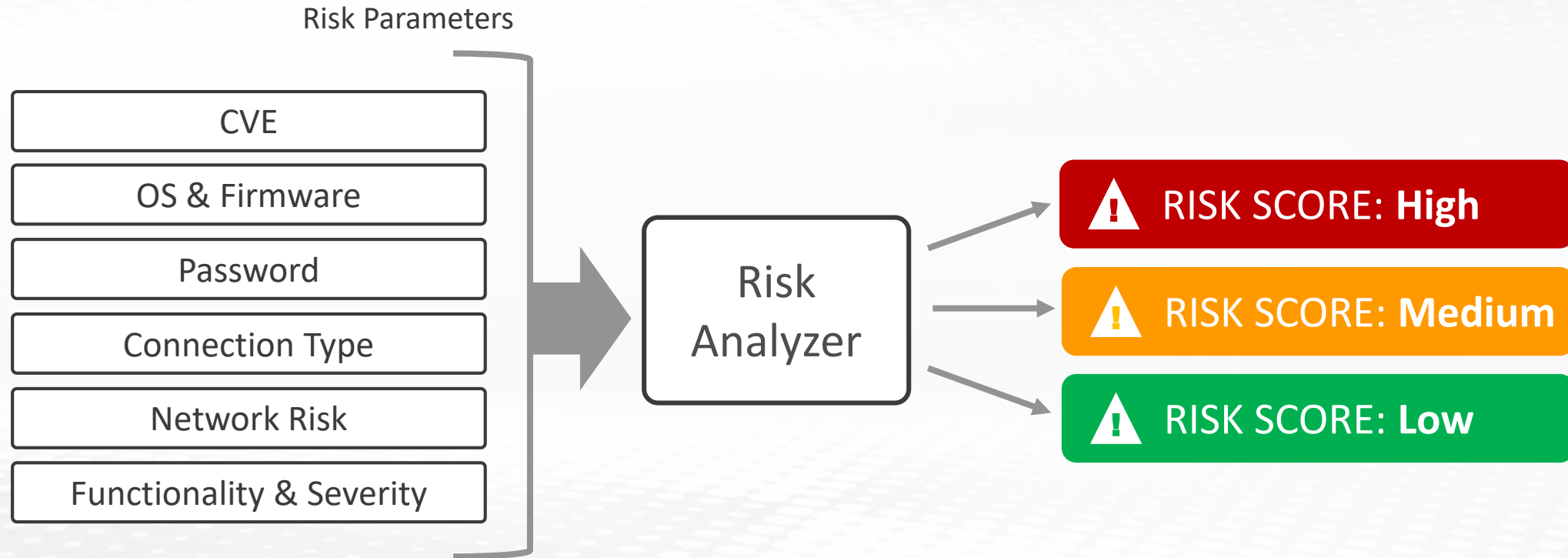
SERIAL NUMBER	LOCAL NAME
E9-0526	OEC #1

Information provided by

Add Tag Vendor:Phil... Device type...

OK Cancel

Set Risk Score for each Device



StandardManage Policies

Access Control

Policy

Network

IoT

Threat Prevention

Policy

Shared Policies

Geo

Policy

Gateways

Exceptions

Inspection Settings

Access Tools

VPN Communities

Updates

UserCheck

Client Certificates

Application Wiki

Installation History

Shared

No. Name Source Destination Services & Applications Action Track Install On

1 Patient Monitoring Philips IntelliBridge EC10 P... Philips IntelliVue MX450 P... Any Accept Log Policy Targets

2 MRI MRI Any MRI N/A Policy Targets

2.1 PACS Manufacturer=Philips Philips Ingenia PACS (fer5... DICOM Protocol Accept Log Accounting Policy Targets

2.2 Update Service Manufacturer=Philips .philips.com https Accept Log Policy Targets

Missing cleanup rule - Unmatched traffic will be accepted and not logged.

UltraSound Any Any UltraSound N/A Policy Targets

Manufacturer=Philips Galaxy Telecom Technolog... DICOM Protocol Accept Log Accounting Policy Targets

Manufacturer=Philips .philips.com https Accept Log Policy Targets

Missing cleanup rule - Unmatched traffic will be accepted and not logged.

4 E.C.G. ECG Any Any E.C.G. N/A Policy Targets

4.1 PACS Manufacturer=Belkin Inter... Belkin International Inc. I... DICOM Protocol Accept Log Accounting Policy Targets

Missing cleanup rule - Unmatched traffic will be accepted and not logged.

5 Access to Medical Device Any medical_device Any Accept Log Alert Policy Targets

6 Medical Device Access medical_device Any Any Accept Log Alert Policy Targets

Missing cleanup rule - Unmatched traffic will be accepted and not logged.

SummaryDetailsLogsHistory

E.C.G. Rule 4

E.C.G.

Created by: aa

Date created: Apr 22, 2019

Expiration time: Never

Hit Count: 0 (0%, Zero)

Additional Rule Info:

Ticket Number:

Ticket Requester:

IoT Security Rules

IoT Assets

37

Belkin International Inc. Ingenia ECG (fer5863971282557)

Belkin International Inc. Ingenia MRI (fer5863971282566)

Belkin International Inc. Ingenia MRI (fer5863971282566)

Belkin International Inc. Ingenia MRI (fer5863971282566)

Belkin International Inc. Ingenia PACS (fer5863971282566)

CT

CYCLONE MICROSYSTEMS, INC. Ingenia MRI (fer586397128255d)

ECG

FIBERCOM, INC. Ingenia MRI (fer586397128255f)

Galaxy Telecom Technologies Ltd Ingenia UltraSound (fer586397128...

Google Ingenia CT (fer5863971282556)

HUAWEI Ingenia US (fer5863971282555)

IBM Corp Ingenia Tyto (fer5863971282559)

INTEGRATED MEASUREMENT SYSTEMS Ingenia MRI (fer58639712825...

IQ TECHNOLOGIES, INC. Ingenia MRI (fer586397128255e)

LECTRA SYSTEMES SA Ingenia MRI (fer5863971282562)

medical_device

medical_server

METAPHOR COMPUTER SYSTEMS Ingenia MRI (fer5863971282563)

MicroBrain, Inc. Ingenia MRI (fer5863971282560)

MRI

PACS

PANASONIC TECHNOLOGIES, INC. Ingenia MRI (fer586397128255b)

Philips Ingenia Blood Pressure Monitor (fer5863971282558)

Philips Ingenia CT (fer5863971282554)

Belkin International Inc. Ingenia ECG (fer5863971282557)

Data Center Name: MedicalDevice

Data Center Type: MedicalDevice

Type in Data Center: MedicalDevice

Updated on Data Center: 22-Apr-19 09:45

IPs: 34.233.39.94

Function: ECG

Manufacturer: Belkin International Inc.

Location: Building A, Room 5030

Model: Ingenia

Last Modifier: aa

IoT Assets

Finished Creating IoT Layer Succeeded

172.23.125.133

No changes

Simple and Unified IoT Policy Management

Medical Devices (1-4)							
No.	Name	Source	Destination	Services & Applications	Action	Track	Install On
1	Patient Monitoring	Philips IntelliBridge EC10 P...	Philips IntelliVue MX450 P...	* Any	Accept	Log	* Policy Targets
2	High Risk	Risk=HIGH	* Any	* Any	High Risk	NA	* Policy Targets
2.1	Wireless	Connection=Wireless	External Zone	* Any	Drop	Log	* Policy Targets
3	MRI	MRI	* Any	* Any	MRI	NA	* Policy Targets
3.1	Wired	Connection=Wired	* Any	* Any	Wired	NA	* Policy Targets
3.1.1	Philips PACS	Manufacturer=Philips	Philips Ingenia PACS (fer...	DICOM Protocol	Accept	Log Accounting	* Policy Targets
3.1.2	Philips updates	Manufacturer=Philips	.philips.updates.com	https	Accept	Log	* Policy Targets
4	E.C.G.	ECG	* Any	* Any	E.C.G.	NA	* Policy Targets
4.1	E.C.G. PACS	Manufacturer=Belkin Inter...	Belkin International Inc. I...	DICOM Protocol	Accept	Log Accounting	* Policy Targets
Smart Building (5-6)							
5	IP CAM	IP CAM	* Any	* Any	IP CAM	NA	* Policy Targets
5.1	IP CAM to BMS	IP CAM	BMS	ONVIF Protocol	Accept	Log	* Policy Targets
5.2	Hikvision updates	Manufacture=Hikvision	.hkvs.updates.com	https	Accept	Log	* Policy Targets

Security Rules Based on IoT Devices Attributes

Medical Devices (1-4)							
No	Name	Source	Destination	Services & Applications	Action	Task	Install On
1	Patient Monitoring	Philips IntelliBridge EC10 P...	Philips IntelliVue MX450 P...	* Any	Accept	Log	* Policy Targets
2	High Risk	Risk=HIGH	* Any	* Any	High Risk	NA	* Policy Targets
2.1	Wireless	Connection=Wireless	External Zone	* Any	Drop	Log	* Policy Targets
Medical Devices (1-4)							
2	High Risk	Risk=HIGH	* Any	* Any	High Risk	NA	* Policy Targets
2.1	Wireless	Connection=Wireless	External Zone	* Any	Drop	Log	* Policy Targets
4	E.C.G.	ECG	* Any	* Any	E.C.G.	NA	* Policy Targets
4.1	E.C.G. PACS	Manufacturer=Belkin Inter...	Belkin International Inc. I...	DICOM Protocol	Accept	Log Accounting	* Policy Targets
Smart Building (5-6)							
5	IP CAM	IP CAM	* Any	* Any	IP CAM	NA	* Policy Targets
5.1	IP CAM to BMS	IP CAM	BMS	ONVIF Protocol	Accept	Log	* Policy Targets
5.2	Hikvision updates	Manufacture=Hikvision	.hkvs.updates.com	https	Accept	Log	* Policy Targets

Security Rules Based on IoT Devices Attributes



Check Point
SOFTWARE TECHNOLOGIES LTD.

Smart Building Devices

No.	Name	Source	Destination	Services & Applications	Action	Track	Install On
1	Patient Monitoring	Philips IntelliBridge EC10 P...	Philips IntelliVue MX450 P...	* Any	Accept	Log	* Policy Targets
2	High Risk	Risk=HIGH	* Any	* Any	High Risk	NA	* Policy Targets
Smart Building (5-6)							
5	IP CAM	IP CAM	* Any	* Any	* Any	IP CAM	
5.1	IP CAM to BMS	IP CAM	BMS	ONVIF Protocol	Accept		
5.2	Hikvision updates	Manufacture=Hikvision	.hkvs.updates.com	https	Accept		
4	E.C.G.	ECG	* Any	* Any	E.C.G.	NA	* Policy Targets
4.1	E.C.G. PACS	Manufacturer=Belkin Inter...	Belkin International Inc. I...	DICOM Protocol	Accept	Log Accounting	* Policy Targets
Smart Building (5-6)							
5	IP CAM	IP CAM	* Any	* Any	IP CAM	NA	* Policy Targets
5.1	IP CAM to BMS	IP CAM	BMS	ONVIF Protocol	Accept	Log	* Policy Targets
5.2	Hikvision updates	Manufacture=Hikvision	.hkvs.updates.com	https	Accept	Log	* Policy Targets

Accept only ONVIF protocol

Source = IP Cameras

Destination = BMS

Source = Hikvision Cameras

Destination = Hikvision Updates Server

Accept only https



Check Point®
SOFTWARE TECHNOLOGIES LTD

THANK YOU

WELCOME TO THE FUTURE OF
CYBER SECURITY

POWERED BY  CHECK POINT
INFINITY

CLOUD • MOBILE • THREAT PREVENTION